



YAGP

Regional Semi-Final Tour Guide

YAGP San Francisco, CA

January 20-22, 2023

Dear Friends,

We are thrilled to welcome you to the Youth America Grand Prix 2023 competition season. Below, you will find a preliminary timeline to help you plan your schedule, and venue information, in order to help you choose the right Semi-Final location for you.

TIMELINE

Please note that the posted timeline is NOT FINAL, and is only meant to give you an idea of how each particular semi-final will be structured. For example, the Semi-Final usually begins with the pre-competitive group performances, followed by junior groups, senior groups and ensembles. Workshops usually take place differently in each venue, depending on the size of the group and the location. Depending on additional availability of studio and theater space, we may accommodate additional participants from the waiting list, by making adjustments to the timeline and adding an additional day to the competition. In this case, the timeline will state that additional dates are "pending". If you do not see this, it means the venue has no more available time, and will only accommodate a set number of participants. Please comeback to this guide to check on updates.

The breakdown will be made clear in the final timeline and detailed schedule. The final timeline with detailed schedule will be posted 7 days before the event.

We strongly suggest that you only finalize travel arrangements after the first draft of the updated schedule has been posted, 30 days before the event.

Each semi-finalist is invited to participate in one workshop, consisting of two classes. Closer to the event, the master classes will be divided up by age and/or performance, at the discretion of the YAGP regional team. For example, sometimes the classes are split by age (12-14, for example) or sometimes by Soloist/Ensemble.

VENUE

Here you will find details about all Semi-Final event facilities, including theaters and studios. The number of seats in the theater can be used as a good indicator of the size of the event -- the smaller the size of the auditorium, the more limited the capacity of the event, and vice versa. Semi-finals that take place later in the season usually get more crowded. In all cases, we recommend registering early to ensure participation in your preferred venue.

Best of luck this season, and please do not hesitate to send all your additional questions to regional@yagp.org.

All the best,

The YAGP Team

YAGP 2023 San Francisco January, CA

Important Information

About the Venue: Capuchino Performing Arts Center is located just off the El Camino in San Bruno, alongside which a number of restaurants can be found. The theater is also minutes away from the San Francisco Airport.

Theater:

Theater: Capuchino Samuel Johnson, Jr. Performing Arts Center

Website: <http://smuhsd.theater/capuchino-performing-arts-center/>

Address: 336-398 Millwood Dr, Millbrae, CA 94030

Stage size: 44'x37'

Auditorium Size: 938 seats

Nearby restaurants: A variety of fast-food Chinese, American, Vietnamese and Mexican options within 5 min drive from the theater.

Parking: Free, but limited parking spots are available at the venue near Millwood Dr. and Barcelona Dr..

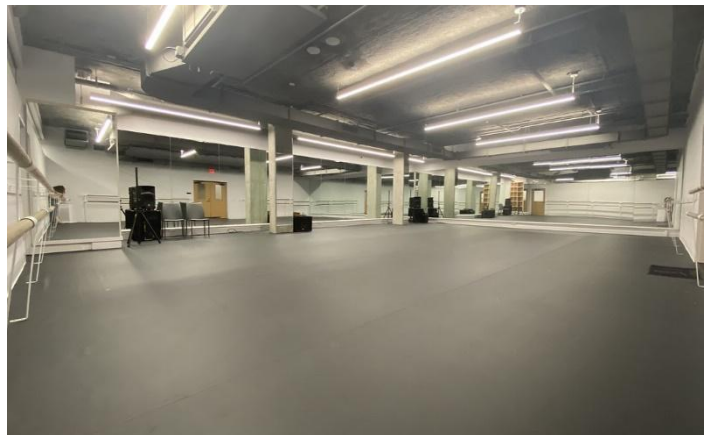
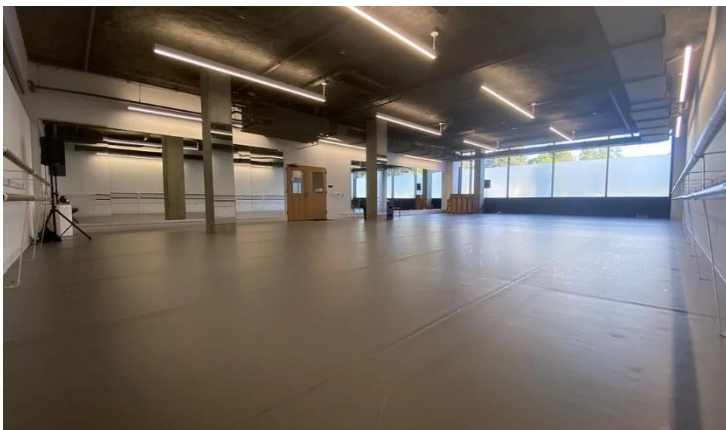


Studios:

City Ballet San Francisco

Website: info@cityballetsf.org

Address: 30 Otis St, San Francisco, CA 94103



Hotel:

The Westin San Francisco Airport ★★★★★

Address: 1 Old Bayshore Hwy, Millbrae, CA 94030

Phone contact: (650) 692-3500

Website: [LINK](#)

YAGP special guest rate for 1 guest room: \$189

Distance from hotel to the theater: 6.5 miles, approximately 17 minute drive

Parking: \$25/Day

Wifi: Complimentary

Breakfast: On-Site Restaurant Available

Shuttle: Complimentary Airport Shuttle

Book By: 12/19/23

Reservation method: Please use our special booking link here: [LINK](#) Or call the hotel directly at **(650) 692-3500** and mention YAGP to get the special rate.



Map:



Distances:

- Distance from airport to theater:** 3 miles, approximately 10 minute drive
- Distance from airport to studios:** 12.9 miles, approximately 16 minute drive
- Distance from airport to hotel:** 2.2 miles, approximately 4 minute drive
- Distance from hotel to theater:** 6.5 miles, approximately 17 minute drive
- Distance from hotel to studios:** 2.3 miles, approximately 10 minute drive
- Distance from theater to studios:** 14.1 miles, approximately 30 minute drive